

Fine Jewellery Auction, 22nd Mar, 2024 11:00

- 1070 **A Spanish diamond and high-carat gold pendant**, circa 18th Century, of pierced scrolling foliate design, set with 25 rose cut diamonds, tests as approximately 18ct gold, 6.5cms high, on later gilt metal chain, 13.9g (excluding chain).
£300-500



- 1071 **A single stone solitaire diamond ring**, the brilliant cut diamonds weighing approximately 0.50 carats, in 18ct white gold mount and shank, ring size M, 2.5g gross.
Note: independent valuation states clarity VS2 and colour G.
£300-400



- 1072 **A 9ct yellow gold albert chain**, with t-bar and clasps, 40cms long, 25.4g.
£300-500



- 1073 **An early Victorian pearl fringe necklace**, the seed-pearl tied to mother of pearl mounts, decorated with strawberries and leaves, on a pearl set gold clasp, 40cms long, in a contemporary red leather case with additional fittings.
£400-600



- 1074 **An opal and ruby bracelet**, the graduated links set with circular opal cabochons and facet cut rubies, in yellow gold mount, the clasp stamped '9c', 17cms long, 9.5g gross.
£250-350



Fine Jewellery Auction, 22nd Mar, 2024 11:00

- 1075 **A diamond dress ring**, the principle plaque set with nine princess-cut diamonds flanked by brilliant and baguette-cut diamond shoulders, 18ct yellow gold mount and shank, ring size L, 7.7g gross (seemingly lead filled mount), with a Pure Gold Certificate stating ref 7244m total diamond weight 1.063 carats, colour G-H, clarity VS-SI.
£300-400



- 1076 **A ruby and diamond cluster ring**, the oval facet-cut ruby measuring 7.5 x 5.7 x 4.5mm, surrounded by ten brilliant-cut diamonds weighing a total of approximately 1.00 carats, in 18ct white gold mount and yellow gold shank, ring size M, 4.2g gross.
£500-800



- 1077 **Vera Wang, Love: a sapphire and diamond cluster ring**, the oval facet cut sapphire 6.9 x 5.0mm, surrounded by brilliant-cut diamonds with a total weight of approximately 0.70carats, on 18ct white gold shank, ring size L, 6.8g gross, with pouch, box and case.
£500-800



- 1078 **Vera Wang, Love: a sapphire and diamond half hoop eternity ring**, in open mount on 18ct white gold shank, ring size L, 2.8g gross, with pouch, box and case.
£150-250



- 1079 **Vera Wang, Love: a sapphire and diamond half hoop eternity ring**, on 18ct white gold shank, ring size L, 2.9g gross, with pouch, box and case.
£100-200



Fine Jewellery Auction, 22nd Mar, 2024 11:00

- 1080 **A sapphire and diamond cluster ring**, the oval facet cut sapphire measuring 7.5 x 5.8 x 2.6mm, surrounded by ten brilliant cut diamonds weighing a total of approximately 0.50 carats, in 18ct white gold mount and shank, ring size M, 3.8g gross.
£250-350



- 1081 **A cultured pearl and diamond ring**, the central cultured pearl 5.3mm wide, flanked by brilliant cut diamonds, 18ct yellow gold mount and shank, ring size J, 3.2g gross.
£100-200



- 1082 **A single stone diamond ring**, the brilliant cut diamond in 18ct white gold mount and yellow gold shank, ring size variable, 3.0g gross.
£100-200



- 1083 **A pair of diamond stud earrings**, each brilliant cut diamond weighing approximately 0.25carats, in 18ct yellow gold post and butterfly mounts, 1.2g gross.
£250-350



- 1084 **A single-stone diamond pendant**, the brilliant cut diamond weighing approximately 0.35carats, in 18ct yellow gold mound, on 18ct yellow gold cable link chain, 2.3g gross.
£200-400



Fine Jewellery Auction, 22nd Mar, 2024 11:00

- 1085 **An Edwardian pink-tourmaline, peridot and seed-pearl pendant**, possibly representing women's suffrage, in yellow gold mount, tests at approximately 15ct gold, 44mm high, 4.4g gross.
£100-150



- 1086 **An Art Deco citrine and diamond ring**, the rectangular step-cut citrine measuring 17.6 x 14.5 x 10.4mm, flanked by stepped diamond set shoulders in platinum mount and 9ct white gold shank, ring size M (with pips, would fit larger), 7.2g gross.
£100-200



- 1087 **A gold, emerald and diamond brooch**, the leaf pattern yellow gold brooch tests at approximately 18ct gold, set with five emeralds and five diamonds, unmarked, 55mm wide, 14.5g gross.
£300-500



- 1088 **A diamond and 18ct yellow gold brooch**, of bow design, 42mm high, 6.8g gross.
£150-250



- 1089 **A Venezuelan gold brooch and matching earrings**, each set with baroque pearl to stamen, tests at 14-18ct gold, brooch 82mm high, earrings with screw fittings, 33.1g gross.
£400-600



Fine Jewellery Auction, 22nd Mar, 2024 11:00

- 1090 **A black boulder opal pendant**, the cabochon 18.3 x 13.7mm in 9ct yellow gold scrolling mount, on 9ct yellow gold box link chain, pendant 30mm high, 5.6g gross.
£150-200



- 1091 **A black boulder opal ring**, the cabochon 9.5 x 9.0mm, on 9ct yellow gold crossover mount and shank, ring size N, 2.5g gross.
£100-150



- 1092 **A late Victorian five stone diamond bar brooch**, the graduated old-cut diamonds weighing a total of approximately 0.95 carats, on white faced yellow gold bar, 55mm wide, 3.6g gross.
£150-200



- 1093 **A water-opal tie pin**, the oval cabochon 10.5 x 6.6mm, in gold mount and bar, 8.0cms high, 3.3g gross.
£50-100



- 1094 **A fox mask tie pin**, the gold mask with ruby cabochon eyes, on gold pin, 5.8cms high, 2.2g gross.
£40-60



Fine Jewellery Auction, 22nd Mar, 2024 11:00

- 1095 **A Victorian mourning brooch**, set with red-paste and seed pearls around a plaque window, in gold mount, 24mm wide; and **three tie pins**, 12.5g gross. (4)
£80-120



- 1096 **An early 19th Century fob seal**, the oval carnelian matrix engraved with motto 'Moveo et Proficio' for the Knox family, in gold mount, 43mm high, 12.3g gross.
£80-120



- 1097 **A cultured pearl brooch**, set in gold mount, 55mm wide, 10.9g gross.
£100-150



- 1098 **A Victorian horseshoe pattern tie pin**, set with turquoise cabochons and half-pearls, in gold mount and pin, 7.0cms high, 2.8g gross.
£50-70



- 1099 **An Edwardian fly-pattern tie pin**, set with seed pearls, banded agate body and ruby cabochon eyes, in gold mount and pin, 6.6cms high, 2.5g gross.
£100-150



All lots are subject to a Buyer's Premium of 25% plus VAT (30% in total)

Fine Jewellery Auction, 22nd Mar, 2024 11:00

- 1100 **A 19th Century flower pattern brooch**, the central golden-topaz surrounded by oval facet-cut garnets, in gold mount, 22mm wide, 4.2g gross.
£100-150



- 1101 **A selection of fob seals**, set with glass, agate, carnelian and set in gilt and gold mounts. (6)
£100-200



- 1102 **A late Victorian shamrock pattern bar brooch**, set with four heart-shaped opal cabochons to leaves around an old-cut diamond flanked by two further diamond terminals, on 15ct gold knife-edge bar, 47mm wide, 4.8g gross, boxed.
£150-250



- 1103 **A Victorian opal and diamond pendant**, the principal cluster with six opal cabochons amongst old-cut diamonds, holding two drops, in gold mount on white and yellow gold trace-link chain, pendant 50mm high, 4.6g gross, in fitted velvet box retailed by James R. Ogden, Harrogate.
£300-500



- 1104 **A two-stone diamond ring**, the brilliant-cut diamonds in illusion setting weighing a total of approximately 0.70carats, in 18ct white gold mount and yellow gold shank, ring size M, 2.8g gross.
£250-350



All lots are subject to a Buyer's Premium of 25% plus VAT (30% in total)

Fine Jewellery Auction, 22nd Mar, 2024 11:00

- 1105 **A single stone diamond ring**, the brilliant-cut heart-shaped diamond measuring 6.5 x 6.6 x 3.7mm estimated to weigh approximately 0.95 carats, in 18ct white gold mount and yellow gold shank, ring size M, 3.2g gross.
£1,000-2,000



- 1106 **A single-stone diamond pendant**, the brilliant-cut diamond weighing approximately 0.65 carats, in white gold mount and yellow gold bale, on 18ct yellow gold curb link chain, 3.6g gross.
£200-300



- 1107 **A pair of diamond stud earrings**, the brilliant-cut diamonds weighing a total of approximately 0.70 carats, in white gold mounts and yellow gold post and butterfly fittings, 1.2g gross.
£200-300



- 1108 **A demi-parure of diamond and cultured-pearl jewellery**, comprising necklace, bracelet and earrings: the triple row necklace strung knotted to an 18ct yellow gold, diamond and cultured-pearl clasp, by Crop & Farr; a four-row cultured pearl bracelet with matching clasp by JSB, and **a pair of earrings to match**, clasps also by JSB, all hallmarked circa 1990s, necklace 35cms long, bracelet 16cms long, and earrings 2.0cms diameter.
£400-600



- 1109 **A late 19th Century Norwegian pearl-set gold celestial brooch**, by Jacob Ulrich Holfeldt Tostrup, Christiana (Oslo), the central pearl surrounded by engraved stars, with locket compartment to the back, indistinctly stamped '(J.)T. (1)4K' to pin mount, 3.5cms diameter, 11.3g gross, in original box.
£200-400



All lots are subject to a Buyer's Premium of 25% plus VAT (30% in total)

Fine Jewellery Auction, 22nd Mar, 2024 11:00

- 1110 **An emerald and diamond cluster ring**, the rectangular step-cut emerald measuring 10.3 x 7.7mm (depth unobtainable), surrounded by brilliant-cut diamonds, on 18ct white gold mount and yellow gold shank, ring size J, 4.7g gross.
£300-400



- 1111 **An amethyst and diamond ring**, the oval facet cut amethyst measuring 13.6 x 13.0mm (depth unobtainable), flanked by eight-cut diamonds, in 18ct white gold mount and shank, ring size 5.8g gross.
£100-200



- 1112 **A diamond cluster ring**, the central brilliant cut diamond weighing approximately 0.30 carats, surrounded by twelve brilliant cut diamonds and further diamonds to shoulders, total diamond weight approximately 0.55 carats, in 18ct white gold mount and shank, ring size K, 4.6g gross.
£200-300



- 1113 **A nine stone half-hoop eternity ring**, the graduated brilliant cut diamonds weighing a total of approximately 0.50 carats, in 18ct white gold mount and shank, ring size O, 3.6g gross.
£150-200



- 1114 **A loose marquise-cut diamond**, the modified brilliant marquise-cut diamond measuring 6.82 x 3.65 x 2.35mm estimated to weigh 0.40 carats with GIA certificate stating natural fancy light yellow with a clarity of SI2, no. 110220212772.
Note: VAT is payable on both hammer and commission as loose precious stones must be sold outside the margin scheme.
£200-300



Fine Jewellery Auction, 22nd Mar, 2024 11:00

- 1115 **A loose pear-cut diamond**, the brilliant pear-cut diamond measuring 5.80 x 3.83 x 2.45mm estimated to weigh 0.32 carats with GIA certificate stating natural very light pink with a clarity of VS2, no.110220120148.
Note: VAT is payable on both hammer and commission as loose precious stones must be sold outside the margin scheme.
£150-250



- 1116 **A loose round-cut diamond**, the round brilliant cut diamond measuring 5.05 x 5.12 x 3.03mm estimated to weigh 0.47 carats with GIA certificate stating natural faint pink with a clarity of SI2, no.110218746477.
Note: VAT is payable on both hammer and commission as loose precious stones must be sold outside the margin scheme.



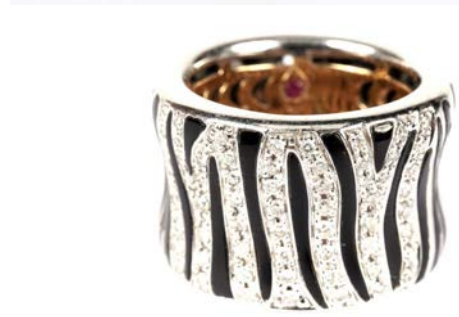
- 1117 **A loose pear-cut diamond**, the brilliant pear-cut diamond measuring 5.01 x 3.55 x 2.63mm, estimated to weigh 0.30 carats with GIA certificate stating natural very light pink with a clarity of VS2, no.5151822681.
Note: VAT is payable on both hammer and commission as loose precious stones must be sold outside the margin scheme.
£100-200



- 1118 **Roberto Coin: a black enamel, ruby and diamond set ring**, of stylized fish design, the 18ct white gold ring decorated with black enamel overall, diamond set lips, fins and tail and ruby set eyes, also with ruby signature set to tail, ring size variable, 17.8g gross.
£1,500-2,000



- 1119 **Roberto Coin: an 18ct white gold, black enamel and diamond 'Zebra' ring**, decorated with zebra striped design part set with brilliant-cut diamonds, with ruby signature set to yellow gold interior, ring size L, 17.5g gross.
£300-500



All lots are subject to a Buyer's Premium of 25% plus VAT (30% in total)

Fine Jewellery Auction, 22nd Mar, 2024 11:00

- 1120 **Roberto Coin: a pink enamel and diamond set ring**, in 18ct white gold mount and shank, set ruby signature inside shank, ring size L, 15.1g gross.
£250-350



- 1121 **Roberto Coin: a red and black enamel and diamond set ring**, in 18ct white gold mount and shank set ruby signature, ring size O, 13.1g gross.
£250-350



- 1122 **Roberto Coin: a white and black enamel and diamond set ring**, in 18ct white gold mount and shank set ruby signature, ring size M, 12.5g gross.
£250-350



- 1123 **Adam Buck: an 18th Century miniature portrait of a woman**, signed and dated 'A Buck 1778', painted on ivory, in gold mount engraved 'From Frances 1795', 32mm high, 6.7g gross. Ivory self-declaration submission reference 9UBSQ7PL
£200-300



- 1124 **A three stone diamond ring**, the brilliant-cut diamonds weighing a total of approximately 0.55 carats, on an 18ct gold shank, ring size M, 2.5g gross.
£200-300



All lots are subject to a Buyer's Premium of 25% plus VAT (30% in total)

Fine Jewellery Auction, 22nd Mar, 2024 11:00

- 1125 **A Belle Epoque French emerald and diamond bar brooch**, channel set with alternating groups of calibr  cut emeralds, and round-brilliant-cut diamonds, on high-carat yellow metal, bearing the eagle's head mark for 18ct gold, 8cms in length, 6g gross.
 300-500



- 1126 **Two fancy 9ct gold fetter-link watch chains**, converted to be worn as necklaces, of alternating yellow and white gold links, 24.4g gross.
 220-280



- 1127 **A contemporary high-carat two-tone brick-link bracelet**, stamped "18", for 18ct gold, 19.8g gross.
 350-400



- 1128 **A high carat yellow-metal fancy-link watch or guard chain**, marked 14K, 46cms, 11.5g gross.
 100-150



- 1129 **Three 9ct rose gold curb-link watch chains**, each with T-bars, swivels, and fobs, one with a 1900 gold half sovereign, one with an 1891 1 Pond, 61.3g gross. 420 gold
 750-900



All lots are subject to a Buyer's Premium of 25% plus VAT (30% in total)

Fine Jewellery Auction, 22nd Mar, 2024 11:00

- 1130 **A sapphire and diamond bar brooch**, millegrain-set within an openwork knot, on yellow metal, 67mm wide, 4.1g gross.
£50-100



- 1131 **A late 19th Century Baroque-style gold, amethyst, emerald, and pearl brooch**, with dependent drop, 4.5 x 4cms (excluding drop) 15.4g gross.
£300-500



- 1132 **Two diamond dress rings, one of navette form**, with foliate moulded sides, sizes M 1/2 and K 1/2 respectively, 3.4g gross, early 20th Century.



- 1133 **A single stone diamond ring**, the old cut weighing approximately 0.25 carats, in star-setting on 18ct gold shank, ring size S, 6.3g gross.
£300-400



- 1134 **A late Victorian diamond dress ring**, the navette-shaped face pavé-set with rose-cut diamonds, Birmingham, 1898, size N, 2.7g gross.
£200-400



All lots are subject to a Buyer's Premium of 25% plus VAT (30% in total)

Fine Jewellery Auction, 22nd Mar, 2024 11:00

- 1135 **A diamond dress ring, in an open flowerhead arrangement, millegrain-set between trifurcated shoulders, on an 18ct gold shank, size H, 2.5g gross.**
£80-120



- 1136 **Two antique pearl dress rings, one marked 18, for 18ct gold, sizes J 1/2, and K 1/2, 5.6g gross.**
£100-200



- 1137 **A ruby and diamond dress ring, having a central cushion-cut diamond flanked by two mixed-cut rubies, in an open claw setting, on a yellow-metal shank, size K, 2.7g gross.**
£100-200



- 1138 **A pearl and diamond dress ring, the bifurcated shank resulting in a pair of ring faces, each set in a bow-tie arrangement with central pearl flanked by rose-cut diamonds, on a yellow-metal shank, size Q, 3.1g gross.**
£200-300



- 1139 **A single stone diamond ring, of Art Deco influence, having a central brilliant-cut solitaire diamond, flanked by faceted platinum shoulders, on an 18ct gold shank, size M 1/2, 2.2g gross.**
£150-250



All lots are subject to a Buyer's Premium of 25% plus VAT (30% in total)

Fine Jewellery Auction, 22nd Mar, 2024 11:00

- 1140 **A diamond dress ring**, in a flowerhead cluster arrangement, on a 14ct white gold shank, stamped 585, size L 1/2, 2.1g gross.
£150-250



- 1141 **A diamond set shirt stud**, on a high-carat yellow metal, stamped 15ct, together with **four pairs of 9ct gold cufflinks**, and one extra, 32g gross.
£280-350



- 1142 **A Victorian ruby and diamond stick pin**, the terminal in the form of interlocking triangles, set with calibr  cut rubies and brilliant-cut diamonds, on yellow-metal, 7cms, 2.1g gross.
£80-120



- 1143 **A pearl and diamond bar brooch**, the blade bar centrally set with a millegrain set old-cut diamond, flanked by pearls to each terminal, on yellow-metal, 6.5cms, 3.9g gross.
£300-500



- 1144 **A three stone sapphire and diamond ring**, having a central square-cut sapphire flanked by a pair of brilliant-cut diamonds, on an 18ct gold shank, size L 1/2, 3.2g gross.
£200-300



All lots are subject to a Buyer's Premium of 25% plus VAT (30% in total)

Fine Jewellery Auction, 22nd Mar, 2024 11:00

- 1145 **A selection of wedding bands and other rings**, comprising: a platinum ring, 4.1g gross; three 22ct gold ring, 15.2g gross; and two 9ct gold, one of buckle design, 7.1g gross. (6)
£500-700



- 1146 **Two diamond set rings**, one of art Deco design, the face pavé-set with four old cut diamonds, on a high carat yellow-metal shank, marked 18ct, size M, the other gypsy-set with a solitaire diamond, size S, 7.7g gross.
£100-150



- 1147 **A five stone diamond ring**, the graded old-cut diamonds claw-set above a fleur-de-lis gallery, on a yellow-metal shank, size O 1/2, 3.2g gross.
£300-500



- 1148 **A late Victorian yellow-metal guard or muff chain**, fancy fetter-style links, marked 9ct, 23g gross.
£200-250



- 1149 **A diamond bar brooch**, reconfigured from a Georgian jewellery piece, comprising 13 mixed-cut diamonds, cut-down collet set in silver, on a yellow gold pin, 5.5cms in length, 7.0g gross.
£200-300



Fine Jewellery Auction, 22nd Mar, 2024 11:00

- 1150 **A late Victorian fancy curb link guard or muff chain, with swivel, marked 9ct, 36.7g gross.**
£320-380



- 1151 **A late Victorian brooch with hand-enamelled porcelain plaque depicting a young lady holding a key at her window, bezel-set in a yellow-metal frame, 5.5 x 4.5cms total, 20.2g gross.**
£200-300



- 1152 **An ambler necklace, of fifty-five graduated beads measuring from 11.3 x 8.3mm to 22.5 x 7.2mm, strung knotted, 86cms long, 46.2g gross; together with a bracelet, of faceted beads, 24cms long, 7.1g gross.**
£100-200



- 1153 **A ruby and diamond cluster ring, the central circular facet-cut ruby surrounded by eight old-cut diamonds weighing a total of approximately 1.20 carats, in gold mount and shank, ring size N, 3.4g gross.**
£400-600



- 1154 **A carved onyx intaglio bead, decorated with a stylized giraffe, with hole through the middle, in later gold pendant mount, 34 x 26mm.**
£100-200



Fine Jewellery Auction, 22nd Mar, 2024 11:00

- 1155 **A fire opal and diamond ring**, the oval opal cabochon measuring 13 x 9mm, within textured diamond set gold mount, on gold shank, ring size O, 14.6g gross.
£100-200



- 1156 **A white opal and emerald ring**, the oval opal cabochon measuring 13 x 12mm, within textured emerald set gold mount, on gold shank, ring size O, 15.4g gross.
£200-400



- 1157 **A black opal ring**, the oval opal cabochon measuring 14.8 x 9.0mm, collect set in 18ct yellow gold mount and shank, ring size S, 8.5g gross.
£200-300



- 1158 **A fire opal and diamond ring**, the oval opal cabochon measuring 16.7 x 11.6mm, flanked by brilliant cut diamonds, 18ct yellow gold mount and shank, ring size S, 7.4g gross.
£100-200



- 1159 **A black boulder opal pendant**, the oval opal cabochon measuring 15.7 x 12.4mm, in gold collet mount and bale, 30mm high overall, 5.4g gross.
£150-200



Fine Jewellery Auction, 22nd Mar, 2024 11:00

- 1160 **A Chinese carved opal pendant** of a sage holding a lotus flower, on 15ct yellow gold cable link chain, the pendant 35mm high, 10.0g gross.
£200-300



- 1161 **A baroque pearl and water opal necklace**, the opal (damaged) in 9ct yellow gold mount, held by baroque pearl necklace, 38cms long.
£50-100



- 1162 **A 19th Century carved coral cameo brooch**, decorated with Poseidon flanked by hippocampi, in 9ct yellow gold mount, 65 x 44mm.
£100-200



- 1163 **A 19th Century carved lava cameo bracelet**, the six varicoloured oval panels decorated with classical female figures, 18cms long, 52.6g gross.
£200-300



- 1164 **An opal bead necklace**, the spherical beads measuring from 11.0mm to 4.2mm, strung knotted, 55cms long.
£200-300



All lots are subject to a Buyer's Premium of 25% plus VAT (30% in total)

Fine Jewellery Auction, 22nd Mar, 2024 11:00

- 1165 **A white opal pendant**, the oval opal cabochon measuring 30 x 19mm, in gold collet mount with Greek-key design, engraved '18k' to back, 40mm high overall, 11.0g gross.
£300-400



- 1166 **A late 19th Century peacock pattern pendant**, polychrome enamel on 15ct yellow gold, standing in a flower decorated ring, 33mm high, 6.9g gross, (damages to enamel).
£100-200



- 1167 **A 19th Century Austro-Hungarian Saint George and the Dragon pattern pendant**, polychrome enamelled with pearl drop and green-paste stones to hanging bars, 72mm high, 23.6g gross.
£100-200



- 1168 **A 19th Century Austro-Hungarian Saint George and the Dragon pendant**, polychrome enamelled and set with emeralds and rose-quartz, later fitted brooch pin, 80mm high.
£150-250



- 1169 **A Roman carnelian intaglio ring**, circa 2nd-3rd Century AD, the intaglio decorated with seated Apollo, mounted within the original iron ring mount, later encapsulated in 18ct gold, ring size P, 11.7g gross.
£700-1,000



Fine Jewellery Auction, 22nd Mar, 2024 11:00

- 1170 **A pair of 18ct yellow gold and enamel fox and hound pattern cufflinks**, damages to one plaque, by Cropp & Farr, London 1929, each plaque 17mm high, 9.9g gross.
£200-300



- 1171 **An 18ct yellow gold ram pattern ring**, with orange-enamel decoration, ring size variable, 9.0g gross.
£180-250



- 1172 **An emerald eternity ring**, the square single-cut emeralds in platinum mount, ring size N; together with **a sapphire eternity ring**, in engraved silver mount, ring size O. (2)
£100-200



- 1173 **A Victorian diamond cluster ring**, set with eleven old cut diamonds weighing a total of approximately 1.35carats, in silver cut-down collect settings on 18ct yellow gold mount and later 9ct yellow gold shank, ring size N, 5.1g gross.
£300-500



- 1174 **A pear-shaped diamond ring**, pave set with old, brilliant and eight-cut diamonds, weighing a total of approximately 1.10 carats, in gold mount, on later 18ct yellow gold shank, ring size S, 6.1g gross.
£400-600



All lots are subject to a Buyer's Premium of 25% plus VAT (30% in total)

Fine Jewellery Auction, 22nd Mar, 2024 11:00

- 1175 **A ruby and diamond necklace**, the six emerald-cut rubies flanked by brilliant cut diamond trefoils and further diamonds to the 18ct yellow gold bar link chain, 53cms long, 12.9g gross.
£400-600



- 1176 **A pair of sapphire and diamond earrings**, each set with an oval facet-cut sapphire surrounded by eight brilliant-cut diamonds and further square step-cut sapphire to 18ct gold mount, clip fittings, 2.2cms high, 8.5g gross.
£300-400



- 1177 **A 19th Century reverse painted rock-crystal intaglio tie/stock pin**, the circular rock-crystal cabochon painted with a West Highland White Terrier, in gold mount and pin, not marked but mount tests at approximately 14ct and pin at approximately 9ct gold, 8.5cms high, mount 17.6mm diameter, 4.5g gross.
£150-200



- 1178 **A ruby, sapphire, emerald and diamond triple cluster ring**, set with four rubies, four sapphires and size emeralds, all circular facet-cut and centered by three brilliant-cut diamonds, in 18ct yellow gold mount and shank, ring size W, 5.4g gross.
£200-300



- 1179 **A diamond and gold pendant and earrings**, each in the form of a flower centred by a brilliant-cut diamond, unmarked by tests as approximately 18ct gold, the pendant 2.8cms high and on 9ct yellow gold curb-link chain, 7.7g gross.
£200-300



Fine Jewellery Auction, 22nd Mar, 2024 11:00

- 1180 **Links of London: an 18ct yellow gold 'Watch Over Me Serenity' necklace**, the chain of snake and oval links, some set with diamonds, moon charm, pendant of 'all seeing eye', laurel branch and diamond set disc design, diamond shoe horse clasp, 44cms long, 22.0g gross.
£500-800



- 1181 **A single stone solitaire diamond ring**, the brilliant cut diamond weighing approximately 0.57 carats, in 18ct white gold mount and yellow gold shank, ring size M, 3.6g gross, by "The Forever Diamond", with IGI report stating colour E clarity I1, boxed.
£300-500



- 1182 **A garnet and diamond ring**, the facet-cut garnet measuring 7.9 x 7.0 x 3.0mm, flanked by diamond shoulders, in 18ct white gold setting and shank, with engraved inscription to shank interior dated 1939, size R 1/2, 2.3g gross.
£200-300



- 1183 **A diamond ring**, set with sixteen diamonds in two rows, in 18ct white gold mount and shank, ring size K, 4.6g gross.
£300-400



- 1184 **A sapphire and diamond half-hoop ring**, set with six oval facet-cut sapphires and four rows of brilliant cut diamonds, on 18ct white gold shank, ring size J, 12.7g gross.
£500-700



Fine Jewellery Auction, 22nd Mar, 2024 11:00

- 1185 **A citrine ring**, the rectangular step cut citrine measuring 19.7 x 15.0 x 9.9mm, in 9ct yellow gold floral mount and shank, ring size L, 9.8g gross.
£120-180



- 1186 **A diamond cluster ring**, the brilliant cut diamonds set on four levels, in 9ct white gold mount and shank, ring size J, 4.6g gross.
£200-300



- 1187 **A diamond dress ring**, set with brilliant and baguette cut diamonds, total diamond weight approximately 5.00 carats, in 10ct white gold mount and shank, ring size P, 13.2g gross.
£700-1,000



- 1188 **A five stone diamond ring**, the brilliant cut diamond in illusion setting estimated to weigh a total of approximately 0.60 carats, in platinum mount on 18ct yellow gold shank, ring size K, 2.5g gross.
£200-300



- 1189 **A diamond ring**, set with brilliant cut diamonds in triple-row shaped mount, in 14ct white gold mount and shank, ring size K, 5.3g gross.
£400-600



Fine Jewellery Auction, 22nd Mar, 2024 11:00

- 1190 **A single stone solitaire diamond ring**, the brilliant cut diamond measuring 6.5 x 6.5 x 4.1mm, estimated to weigh 1.06 carats, in 18ct white gold mount and yellow gold shank, ring size K, 3.8g gross.
£800-1,200



- 1191 **An emerald and diamond cluster ring**, the rectangular step-cut emerald measuring 9.6 x 7.7mm surrounded by baguette and brilliant cut diamonds weighing a total of approximately 1.70 carats, in white gold mount and yellow gold shank, tests at approximately 14ct, ring size J, 7.6g gross.
£500-800



- 1192 **A Victorian three stone old-cut diamond ring**, the central diamond measuring 6.0 x 5.1 x 2.7mm, estimated to weigh 0.50 carats, flanked by two smaller stones each weighing approximately 0.35 carats and rose cut diamonds, in yellow gold scrolling mount and shank, tests at approximately 18ct gold, ring size I, 3.8g gross.
£1,500-2,500



- 1193 **A single stone solitaire diamond ring**, the brilliant-cut diamond measuring 6.6 x 6.6 x 4.4mm, estimated to weigh 1.21 carats, in platinum mount and 18ct white gold shank, ring size J, 2.4g gross.
£1,000-2,000



- 1194 **A sapphire and diamond cluster ring**, the circular facet cut sapphire surrounded by eight brilliant-cut diamonds weighing a total of approximately 1.20 carats, in 18ct white gold mount and shank, ring size J, 4.0g gross.
£300-400



Fine Jewellery Auction, 22nd Mar, 2024 11:00

- 1195 **A five stone diamond ring**, the brilliant cut diamonds weighing a total of approximately 0.65 carats, in 18ct white gold mount and shank, ring size I, 2.6g gross.
£300-400



- 1196 **A ruby and diamond ring**, the three graduated rubies parted by old-cut diamonds each weighing approximately 0.30 carats, in platinum mount and 9ct white gold shank, ring size J, 2.8g gross.
£300-500



- 1197 **A Victorian ruby and diamond ring**, the central old-cut diamond weighing approximately 0.20 carats in star-setting flanked by rubies, 18ct yellow gold mount and shank, ring size J, 5.8g gross.
£200-300



- 1198 **A Victorian opal and diamond heart-shaped ring**, the heart-shaped opal cabochon surrounded by fourteen old-cut diamonds, in silver cut-down collet setting, in 18ct yellow gold shank, ring size J, 4.2g gross.
£400-600



- 1199 **A sapphire and diamond cluster ring**, the oval facet cut sapphire measuring 9.3 x 7.5mm, surrounded by twelve brilliant-cut diamonds weighing a total of approximately 1.80 carats, in 18ct white gold mount and shank, ring size N, 7.2g gross.
£300-500



Fine Jewellery Auction, 22nd Mar, 2024 11:00

- 1200 **A sapphire and diamond cluster ring**, the oval facet-cut sapphire surrounded by rectangular single-cut sapphires and brilliant cut diamonds, in 18ct white gold mount and shank, ring size N, 6.3g gross.



- 1201 **A sapphire and diamond line bracelet**, set with twelve oval facet-cut sapphires each parted by three brilliant cut diamonds (thirty-six total), in 14ct yellow gold mount, 18.0cms long, 11.0g gross.
£400-600



- 1202 **A sapphire and diamond ring**, set with oval and circular sapphires and brilliant-cut diamonds, in 18ct yellow gold mount and shank, ring size N, 6.3g gross.
£150-250



- 1203 **A sapphire and diamond snow-flake pattern pendant**, set with sapphires and diamonds in 18ct white gold mount, on 14ct white gold bead chain, pendant 23mm high, 8.4g gross.
£100-200

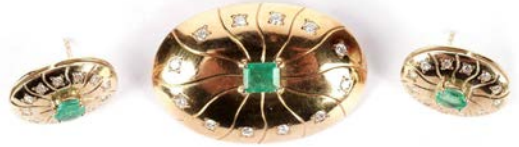


- 1204 **A 9ct yellow gold cuff bracelet**, of bead and lozenge shaped links, circa 1976, 18.5cms long, 41.3g.
£550-650



Fine Jewellery Auction, 22nd Mar, 2024 11:00

- 1205 **An emerald and diamond brooch and matching earrings**, each in 18ct yellow gold mounts, set with emeralds to the centre surrounded by brilliant-cut diamonds, in ray design, the brooch 37mm wide, earrings 18mm wide with post fittings (missing butterflies), 20.9g gross.
£400-600



- 1206 **A pair of sapphire and diamond cluster earrings**, set in fan formation, in 18ct white gold mount and yellow gold posts, each 13.5mm diameter, 6.2g gross, with later rubber fittings, (not weighed).
£250-350



- 1207 **A fire opal and diamond cluster ring**, the oval facet-cut fire opal 7.9 x 6.0 x 3.7mm, surrounded by twelve brilliant cut diamonds weighing a total of approximately 0.60carats, in 18ct white gold mount and yellow gold shank, ring size N, 3.2g gross.
£400-600



- 1208 **Tiffany & Co: a single stone diamond ring**, the brilliant-cut solitaire diamond of measuring 4.47 x 4.75 x 2.92mm estimated to weigh 0.41 carats, crown-set on a platinum shank, ring size H, 4.3g gross, with certificate stating colour I and clarity VS2, inscribed 'T&Co Q02030528'.
£400-600



- 1209 **An aquamarine, peridot and pink-tourmaline brooch**, the oval facet-cut aquamarine measuring 12.0 x 9.3 x 5.2mm, in 9ct yellow gold mount, London 1966, 38 x 35mm, 11.4g gross.
£150-250



Fine Jewellery Auction, 22nd Mar, 2024 11:00

- 1210 **An Edwardian diamond and enamel fob watch**, the silvered arabic dial fitted manual wind movement (not winding on or ticking over), in gold mount with light-blue engine turned enamel and diamond set, the central brilliant-cut diamond weighing approximately 0.20carats, on platinum cable link chain set with seed pearls on diamond set circlet bale, watch 27mm wide, chain 59cms long, 25.6g gross.
£300-400



- 1211 **A fine Italian 18ct yellow and white gold necklace and bracelet**, necklace, 44cms long, bracelet 18.5cms long, 63.0g gross.
£2,000-3,000



- 1212 **Murrie Bennett & Co: a 15ct yellow gold, peridot and seed pearl Art Nouveau pendant**, stamped to the back 'MB&Co 15ct', on cable link chain, the pendant 4.0cms high, chain 42.0cms long, 5.7g gross.
£400-600



- 1213 **A diamond Etruscan revival brooch**, by Ahronsberg Brothers, Birmingham 1904, in 15ct yellow gold, 48mm wide, 5.1g gross.
£50-100



- 1214 **A Victorian 15ct yellow gold Etruscan revival brooch**, of circular form set with seed pearls and beadwork, with vacant hair plaque to reverse, 30mm diameter, 8.7g gross.
£100-150



Fine Jewellery Auction, 22nd Mar, 2024 11:00

- 1215 **A 9ct yellow gold Etruscan revival brooch**, the central half-pearl within blue-enamel star flanked by further blue enamel highlights and rope-twist and bead design, 44mm wide, 7.6g gross.
£100-150



- 1216 **A three stone diamond ring**, the brilliant cut diamonds weighing a total of approximately 0.70 carats, in 18ct white gold mount on yellow gold shank, ring size L, 3.0g gross, purchased through Beaverbrooks with certificate stating colour G and clarity SI1.
£200-300



- 1217 **Faberge: an 18ct yellow gold, red enamel and diamond egg-pattern pendant**, of scrolling design, limited edition 639/1000, with certificate and box, **on associated cultured pearl necklace** with diamond set clasp, pendant 28mm high, necklace 40cms long.
£700-1,000



- 1218 **A pair of diamond and sapphire earrings**, in the form of leopards with ruby set eyes in 18ct yellow gold, clip fittings, each 26mm high, 13.3g gross.
£600-800



- 1219 **A bispoke made tanzanite and diamond ring**, the facet cut tanzanite measuring 7.4 x 7.2 x 4.9mm, estimated to weigh approximately 1.99carat, in 18ct yellow gold floral mount, ring size N, 8.9g gross.



Fine Jewellery Auction, 22nd Mar, 2024 11:00

- 1220 **A Victorian carved shell cameo brooch**, depicting stonemasons, one carving a bust, the other using calipers to measure a corinthian column, bezel-set in a scrolling Rococo frame, 5.5 x 6.5cms high total, 25.2g gross.
£200-300



- 1221 **A ruby and diamond bracelet**, set with two pear-cut rubies surrounded by brilliant cut diamonds, in 18ct white gold mount and yellow gold bracelet, 18cms long, 13.7g gross.
£400-600



- 1222 **A ruby and diamond cluster ring and matching earrings**, each centred by pear-cut ruby surrounded by brilliant-cut diamonds, in 18ct white gold mounts and shank, ring size N, earrings is post and butterfly fitting, 7.2g gross.
£250-350



- 1223 **An emerald and diamond cluster ring**, the oval facet-cut emerald measuring 7.3 x 5.6 x 4.0mm, surrounded by twelve brilliant cut diamonds weighing a total of approximately 0.60carats, in 18ct white gold mount and yellow gold shank, ring size M, 5.4g gross.
£300-500



- 1224 **A single stone solitaire diamond ring**, the brilliant cut diamond weighing approximately 0.65 carats, in 18ct white gold mount and yellow gold shank, ring size O, 2.8g gross.
£300-400



All lots are subject to a Buyer's Premium of 25% plus VAT (30% in total)

Fine Jewellery Auction, 22nd Mar, 2024 11:00

- 1225 **A pair of diamond stud earrings**, weighing a total of approximately 0.60 carats, in 18ct yellow gold mount, post and butterfly fitting, 1.5g gross.
£200-300



- 1226 **A single stone diamond pendant**, the brilliant cut diamond weighing approximately 0.30 carats, in 18ct yellow gold mount, on 18ct yellow gold curb-link chain, 2.7g gross.
£100-150



- 1227 **A heart-cut diamond pendant**, the heart-shaped diamond measuring 7.1 x 6.0 x 4.1mm estimated to weigh 1.00 carats, claw set in 18ct gold, on a 9ct yellow gold chain, 6.3g gross.
£2,000-3,000



- 1228 **Tiffany & Co: a silver and 18ct yellow gold bangle**, of twisted form with 'X'-form terminals, hallmarked Sheffield 2000, 68mm wide (adjustable), 19.5g gross.
£250-350



- 1229 **Tiffany & Co: a silver and 18ct yellow gold necklace**, of curved twisted bars with fluted terminals, hallmarked Sheffield 1997, 39.5cms long, 62.7g gross.
£350-450



All lots are subject to a Buyer's Premium of 25% plus VAT (30% in total)

Fine Jewellery Auction, 22nd Mar, 2024 11:00

- 1230 **Cartier: an 18ct yellow gold snake link chain necklace**, with monogram design to clasp, signed to bar with no. CW2702, 42cms long, 11.3g, with certificate dated 15th December 2004.

£700-1,000



- 1231 **A 9ct rose gold chain necklace and bracelet**, of twist links, necklace 48cms, bracelet 18.5cms long, 31.2g gross.
£300-400



- 1232 **A fine Edwardian diamond bracelet**, pavé with old and eight-cut diamonds weighing a total of approximately 8.50 carats, in articulated rows, the sides of the bracelet engraved with scrolls, in platinum mount, 18.2cms, 33.1g gross.
£3,000-5,000



- 1233 **A diamond set bar brooch**, comprised of eleven old-cut diamonds, in an alternating arrangement of claw and collet settings, total diamond weight approximately 3.20 carats, on white-gold mount, approximately 18ct, 5.5cms, 5.2g gross.
£800-1,200



- 1234 **Jacob & Co, New York: a pair of diamond set yellow gold monogram pattern cufflinks**, total diamond weight approximately 3.36 carats, signed, 17 x 22mm, 14.1g gross, boxed.
£800-1,000



All lots are subject to a Buyer's Premium of 25% plus VAT (30% in total)

Fine Jewellery Auction, 22nd Mar, 2024 11:00

- 1235 **A contemporary Rox single stone diamond ring**, the pear-shaped diamond solitaire surrounded by a conforming diamond halo, and flanked by diamond-set shoulders, on a platinum shank, size M, 3.5g gross.
£400-600



- 1236 **A five stone diamond ring**, the graduated brilliant-cut diamonds weighing a total of approximately 1.80 carats, millegrain set on an 18ct gold shank, size O 1/2, 4.9g gross.
£1,000-1,500



- 1237 **A Victorian gold, diamond and pearl locket pendant**, the central star motif set with rose cut diamonds around half pearl and blue enamel border, the reverse engraved with a monogram, 4.0 x 3.5cms (excluding bale), 18.8g gross.
£1,000-1,500



- 1238 **A Victorian Etruscan revival 15ct yellow gold, onyx and seed pearl brooch**, with champleve enamel decoration, 49mm wide, 6.3g gross.
£250-350



- 1239 **An emerald and diamond ring**, the four circular facet-cut emeralds parted by three brilliant cut diamonds weighing a total of approximately 0.45 carats, in 18ct yellow gold shank, ring size R, 5.6g gross.
£150-250



Fine Jewellery Auction, 22nd Mar, 2024 11:00

- 1240 **A diamond cluster ring**, the nine brilliant-cut diamonds weighing a total of approximately 0.60 carats, in 18ct yellow gold mount and shank, ring size M, 3.3g gross.
£300-500



- 1241 **A Victorian diamond star brooch**, set throughout with old-cut diamonds, the central diamond weighing approximately 0.65carats, total diamond weight approximately 3.50carats, in silver and gold mount, with butterfly screw brooch fitting, 38mm wide, 8.6g gross.
£1,000-2,000



- 1242 **A diamond ring**, the brilliant cut diamond measuring 6.6 x 6.6 x 4.4mm estimated to weigh approximately 1.25 carats, flanked by baguette cut diamond shoulders, on platinum shank, ring size L, 2.3g gross.
£1,500-2,000



- 1243 **A diamond half hoop eternity ring**, set with channel-set brilliant-cut diamonds, weighing a total of approximately 0.15 carats, ring size L, 2.7g gross.
£150-200



- 1244 **A five stone diamond ring**, the graduated brilliant-cut diamonds collet-set, on an 18ct gold shank, ring size P 1/2, 2.5g gross.
£150-250



Fine Jewellery Auction, 22nd Mar, 2024 11:00

- 1245 **A seven stone diamond dress ring**, the brilliant-cut diamonds, weighing approximately 0.25 carats total, on a platinum shank, size N, 2.5g gross.
£100-200



- 1246 **A diamond cluster ring**, the central princess-cut diamond weighing approximately 0.80 carats, claw-set above a square frame of brilliant cut diamonds, on a platinum shank, ring size L 1/2, 7.2g gross, colour approximately G and clarity VS.
£600-1,200



- 1247 **A five stone diamond ring**, the five princess-cut diamonds channel set to the face, weighing approximately 0.50 carats total, on an 18ct gold shank, size M 1/2, 5.2g gross.
£350-450



- 1248 **A five stone diamond ring**, by PhoenixCut, weighing a total of approximately 1.25 carats, claw set on a platinum shank, size L 1/2, 4.7g gross, approximate colour E and clarity VVS.
£800-1,200



- 1249 **A diamond half hoop eternity ring**, set with nine brilliant-cut diamonds, weighing a total of approximately 1.12 carats, on a platinum shank, ring size L 1/2, 9.4g gross.
£600-1,000



All lots are subject to a Buyer's Premium of 25% plus VAT (30% in total)

Fine Jewellery Auction, 22nd Mar, 2024 11:00

- 1250 **A diamond half hoop eternity ring**, channel-set with fifteen alternating baguette-cut and princess-cut diamonds, weighing a total of approximately 1.01 carats, on a platinum shank, ring size M, 7.1g gross.
£600-1,000



- 1251 **A diamond half hoop eternity ring**, set with alternating princess-cut and baguette-cut diamonds, total diamond weight approximately 1.00 carats, on a platinum shank, ring size M 1/2, 8.2g gross, overall colour approximately F/G and clarity VS.
£600-1,000



- 1252 **A diamond eternity ring**, pavé-set brilliant-cut diamonds weighing approximately 0.92 carats total, on an 18ct gold shank, size N, 8.1g gross.
£500-800



- 1253 **A diamond cluster ring**, the central section pave-set with brilliant-cut diamonds, surrounded by brilliant-cut diamonds, of weighing a total of approximately 0.70 carats, on an 18ct white gold shank, size N, 3.4g gross.
£280-350



- 1254 **A diamond ring**, set with twenty-two brilliant cut diamonds, total diamond weight approximately 0.32carats, the setting to fit around an engagement ring, on an 18ct white gold shank, size N, 4.2g gross.
£220-280



All lots are subject to a Buyer's Premium of 25% plus VAT (30% in total)

Fine Jewellery Auction, 22nd Mar, 2024 11:00

- 1255 **A diamond cluster ring**, the rectangular face pavé set in a geometric arrangement with baguette-cut and round brilliant-cut diamonds, framed by a diamond halo, and flanked by diamond-set shoulders, approximately 0.94 total carat weight, on an 18ct white gold shank, 6.2g gross.
£600-1,000



- 1256 **A diamond half hoop eternity ring**, set with three rows of brilliant-cut diamonds, weighing approximately 2.25 carats total, on a platinum shank, size N, 12.1g gross.
£1,000-1,500



- 1257 **A diamond cluster ring**, set with shaped-brilliant cut diamonds to the centre, surrounded by brilliant cut diamonds to surround and shoulders, total weight approximately 0.84 carats, on an 18ct white gold shank, ring size N, 6.2g gross.
£500-800



- 1258 **A diamond dress ring**, set with round brilliant-cut diamonds interspersed with two rows of channel-set baguette-cut diamonds, on an 18ct white gold shank, size O, 11.3g gross.
£1,300-1,800



- 1259 **A triple cluster diamond ring**, the three round brilliant-cut diamonds weighing a total of approximately 1.29 carats, claw-set and surrounded by brilliant-cut diamonds, on a platinum shank, ring size M, 6.5g gross.
£1,000-1,500



All lots are subject to a Buyer's Premium of 25% plus VAT (30% in total)

Fine Jewellery Auction, 22nd Mar, 2024 11:00

- 1260 **A single stone diamond ring**, the brilliant-cut diamond solitaire of approximately 0.10 carats, on an 18ct white gold shank, ring size N, 2.1g gross.
£100-200



- 1261 **A three stone diamond ring**, the central brilliant-cut diamond, claw set and flanked by two further brilliant cut diamonds, total diamond weight approximately 0.75 carats, on a platinum shank, size O 1/2, 4.9g gross.
£500-800



- 1262 **A single stone solitaire diamond ring**, the brilliant-cut diamond weighing approximately 0.51 carats, on a platinum shank, size O, 3.3g gross.
£350-450



- 1263 **A diamond eternity ring**, set at intervals with brilliant-cut diamonds, weighing approximately 0.36 carats total, 18ct yellow gold mount, size L 1/2, 2.6g gross.
£300-350



- 1264 **A Victorian diamond ring**, the old and rose-cut diamonds set to the centre of a scroll, on an 18ct gold shank, size M, 2g gross.
£80-120



Fine Jewellery Auction, 22nd Mar, 2024 11:00

- 1265 **An early 20th Century five stone diamond ring**, the graduated old-cut diamonds held in an open claw setting, on an 18ct gold shank, size O, 2.9g gross.
£80-120



- 1266 **An Art Deco style diamond ring**, the central brilliant-cut diamond weighing approximately 0.46 carats, claw-set, and flanked by millegrain-set diamond shoulders, in a stepped arrangement, on a platinum shank, size L, 3.1g gross.
£350-450



- 1267 **A diamond cluster ring**, the central brilliant-cut diamond weighing approximately 0.28 carats, claw set within a diamond surround, on an 18ct white gold shank, ring size N, 2.4g gross.
£200-300



- 1268 **A single stone solitaire diamond ring**, the central brilliant-cut diamond weighing approximately 0.16 carats, illusion and crown-set above chenier shoulders, on an 18ct gold shank, size J 1/2, 2.7g gross.
£80-120



- 1269 **A solitaire diamond ring**, the brilliant-cut solitaire diamond weighing approximately 0.61 carats, flanked by pavé set diamond shoulders, on a platinum shank, size M, 5.9g gross.
£700-1,200



All lots are subject to a Buyer's Premium of 25% plus VAT (30% in total)

Fine Jewellery Auction, 22nd Mar, 2024 11:00

- 1270 **A single stone solitaire diamond ring**, the brilliant-cut diamond weighing approximately 0.47 carats, in four-claw setting, on a platinum shank, size L, 5.6g gross, approximate colour F/G and clarity SI1.
£500-700



- 1271 **A late Victorian pearl ring**, the seed-pearls set in diamond-shaped mount, Chester 1890, size Q, 2.6g gross.
£80-120



- 1272 **A three stone diamond ring**, the brilliant-cut diamonds claw and crossover set, on an 18ct gold shank, size K, 2.4g gross.
£80-120



- 1273 **A pear-shaped diamond ring**, pavé set with round brilliant-cut diamonds in a pear-shaped mount surrounded by brilliant cut diamonds, and flanked by diamond-set shoulders, total diamond weight approximately 0.50 carats, on an 18ct white gold shank, size M, 2.4g gross.
£200-300



- 1274 **A solitaire diamond ring**, the brilliant-cut diamond, weighing approximately 0.56 carats, flanked by marquise and brilliant cut diamond shoulders and sides, on platinum shank, ring size L, 4.1g gross.
£500-800



All lots are subject to a Buyer's Premium of 25% plus VAT (30% in total)

Fine Jewellery Auction, 22nd Mar, 2024 11:00

- 1275 **A diamond cluster ring**, the central emerald-cut diamond weighing approximately 0.52 carats, surrounded by a diamond-set shoulder, on 18ct gold shank with diamond-set shoulders, size M, 4.3g gross.
£600-1,000



- 1276 **A Victorian pearl and diamond ring**, set with two rows of seed pearls divided by a row of rose-cut diamonds, on a 15ct gold shank, Birmingham, 1881, size R, 2.9g gross.
£120-180



- 1277 **A diamond half hoop eternity ring**, the brilliant-cut diamonds weighing approximately 0.27 carats total, claw and twist-set on a platinum shank, size M, 3.3g gross.
£250-350



- 1278 **A single stone diamond cluster ring**, the central marquise-cut diamond weighing approximately 0.70 carats, surrounded by brilliant cut diamonds, flanked by diamond-set shoulders, on a platinum shank, size L 1/2, 5g gross.
£1,200-1,800



- 1279 **A diamond half hoop eternity ring**, the brilliant-cut diamonds weighing approximately 0.12 carats total, channel-set on a platinum shank, size P, 2.8g gross.
£150-250



Fine Jewellery Auction, 22nd Mar, 2024 11:00

- 1280 **A diamond cluster ring**, the central radiant-cut diamond weighing approximately 0.31 carats, claw-set within a diamond surround, and flanked by diamond-set shoulders, on an 18ct white gold shank, size L 1/2, 3.6g gross.
£350-450



- 1281 **A five stone diamond ring**, the graduated brilliant cut diamonds weighing a total of approximately 0.29 carats, on an 18ct gold shank, size K 1/2, 2.8g gross.
£180-250



- 1282 **A pink sapphire and diamond ring**, the central radiant-cut pink sapphire weighing approximately 0.90 carats, flanked by brilliant-cut diamonds weighing approximately 0.35 carats total, on an 18ct white gold shank, size K 1/2, 4.5g gross.
£450-550



- 1283 **A single stone diamond ring**, the emerald-cut solitaire diamond weighing approximately 0.51 carats, flanked by diamond set shoulders, on a platinum shank, size L 1/2, 4.5g gross, approximate colour G/H and clarity VS.
£450-550



- 1284 **A topaz and diamond cluster ring**, the central oval mixed-cut yellow topaz, surrounded by eight-cut diamonds, on an 18ct gold shank, size M 1/2, 3.2g gross.
£150-250



Fine Jewellery Auction, 22nd Mar, 2024 11:00

- 1285 **A single stone solitaire diamond ring**, the baguette-cut diamond weighing approximately 0.22 carats, on a platinum shank, size L, 4.6g gross, approximate colour G, clarity VS.
£200-300



- 1286 **A pink sapphire and diamond ring**, the central radiant-cut pink sapphire weighing approximately 0.84 carats, claw-set above channel-set princess-cut diamond shoulders, weighing approximately 0.30 carats total, on an 18ct white gold shank, size L 1/2, 4.4g gross.
£280-350



- 1287 **A three stone diamond ring**, the three baguette-cut diamonds rub-over set weighing approximately 0.32 carats total, on 18th yellow gold shank, ring size L, 5.4g gross.
£300-400



- 1288 **A tourmaline, aquamarine, and diamond dress ring**, in a flowerhead arrangement of heart-shaped tourmalines and aquamarines surrounding a brilliant-cut diamond, on 18ct yellow gold shank, ring size N 1/2, 4.7g gross.
£200-300



- 1289 **A diamond cluster ring**, the central brilliant-cut diamond weighing approximately 0.45 carats, surrounded by a diamond surrounded, and flanked by further diamond-set shoulders, on a platinum shank, size M, 3.3g gross.
£500-800



Fine Jewellery Auction, 22nd Mar, 2024 11:00

- 1290 **A three stone ruby and diamond ring**, the central oval facet-cut ruby, flanked by a pair of brilliant-cut diamonds, on a platinum shank, size M, 4.8g gross.
£400-500



- 1291 **A ruby and diamond half-hoop eternity ring**, set with three brilliant-cut diamonds, weighing approximately 0.24 carats total, parting circular facet-cut rubies, weighing approximately 0.62 carats total, on an 18ct gold shank, size P, 4.5g gross.
£280-350



- 1292 **A Swiss blue topaz and diamond cluster ring**, the central step-cut topaz weighing approximately 4.14 carats, claw-set above and surrounded by two channel-set diamond tiers, weighing approximately 0.35 carats total, on an 18ct white gold shank, size L, 7.5g gross.
£300-400



- 1293 **A pink sapphire and diamond half-hoop eternity ring**, the four princess-cut pink sapphires, weighing approximately 0.68 carats total, interspersed with three princess-cut diamonds, weighing approximately 0.49 carats total, channel set, on an 18ct white gold shank, size L, 5.3g gross.
£380-450



- 1294 **An onyx and diamond ring**, the central polished onyx of rounded rectangular form, framed by brilliant-cut diamonds, on an 18ct white gold shank, size L 1/2, 3.6g gross.
£150-250



All lots are subject to a Buyer's Premium of 25% plus VAT (30% in total)

Fine Jewellery Auction, 22nd Mar, 2024 11:00

- 1295 **A diamond half-hoop eternity ring**, pavé set with brilliant-cut diamonds, weighing approximately 0.49 carats total, on an 18ct white gold shank, size M, 4.9g gross.
£250-350



- 1296 **A sapphire and diamond cluster ring**, the central oval mixed-cut sapphire, weighing approximately 0.57 carats, surrounded by brilliant-cut diamonds, weighing approximately 0.15 carats total, on an 18ct gold shank, size L 1/2, 3.7g gross.
£300-400



- 1297 **An opal and diamond cluster ring**, the central cabochon opal claw-set within a brilliant-cut diamond surround, on an 18ct white gold shank, ring size M, 6.4g gross.
£600-700



- 1298 **A sapphire and diamond ring**, the central heart-shaped sapphire of approximately 0.78 carats, flanked by pear-shaped diamond set shoulders weighing a total of approximately 0.14 carats, on an 18ct yellow gold shank, ring size N, 3.8g gross.
£250-350



- 1299 **A three-stone diamond ring**, the brilliant-cut diamonds weighing approximately 0.47 carats total, crossover-set on an 18ct gold shank, ring size O 1/2, 4.4g gross.
£250-350



All lots are subject to a Buyer's Premium of 25% plus VAT (30% in total)

Fine Jewellery Auction, 22nd Mar, 2024 11:00

- 1300 **A sapphire and diamond ring**, the three oval facet-cut sapphires interspersed by pairs of brilliant-cut diamonds, on an 18ct gold shank, size N, 3.6g gross.
£250-350



- 1301 **A tanzanite and diamond cluster ring**, the central oval facet-cut tanzanite surrounded by brilliant-cut diamonds, on an 18ct white gold shank, size N, 3.0g gross.
£300-400



- 1302 **An emerald and diamond cluster ring**, the oval facet-cut emerald weighing approximately 0.91 carats, surrounded by brilliant-cut diamonds, the 18ct white gold shank set with further brilliant cut diamonds to sides and top, size K, 4.6g gross.
£500-800



- 1303 **An opal dress ring**, the cabochon opal collect-set on a shaped 18ct gold shank, ring size M, 4.2g gross.
£180-220



- 1304 **An emerald and diamond half-hoop eternity ring**, set with circular-facet cut emeralds and brilliant cut diamonds, 18ct yellow gold shank, ring size K 1/2, 2.6g gross.
£200-300



Fine Jewellery Auction, 22nd Mar, 2024 11:00

- 1305 **A diamond cluster ring**, the central pavé-set diamond cluster within an 18ct gold gadrooned shank, size T, 8.3g gross.
£350-450



- 1306 **A sapphire and diamond ring**, the central rectangular step-cut sapphire weighing approximately 0.75 carats, flanked by a pair of triangle-cut diamonds, of approximately 0.16 carats total, on a platinum shank, size M, 5.4g gross.
£350-450



- 1307 **A diamond ring**, the brilliant-cut solitaire diamond weighing approximately 0.70 carats, crown set above a platinum shank with diamond-set shoulders, size L, 4.2g gross, colour VS, clarity J.
£800-1,200



- 1308 **A single-stone solitaire diamond ring**, the old cut diamond estimated to weigh approximately 0.70 carats, flanked by diamond shoulders in 18ct white gold mount and shank, ring size M, 3.5g gross.
£400-600



- 1309 **A demi-parure of diamond cluster jewellery**, comprising ring, pendant and earrings, all in 9ct yellow gold mounts, total diamond weight approximately 1.40 carats, ring size I, 9.1g gross.
£500-800



All lots are subject to a Buyer's Premium of 25% plus VAT (30% in total)

Fine Jewellery Auction, 22nd Mar, 2024 11:00

- 1310 **A single stone solitaire diamond ring**, the old cut diamond measuring approximately 7.6 x 6.4 x ??mm, estimated to weigh 1.93 carats, in claw mount and 18ct yellow gold shank, ring size O/P, 13.3g gross.
£4,000-6,000



- 1311 **A nine-stone diamond ring**, the brilliant cut diamonds weighing a total of approximately 0.80 carats, in silver mount and shank, ring size S, 19.7g gross.
£200-300



- 1312 **A pink-topaz and diamond dress ring**, the oval pink topaz measuring approximately 11.9 x 10.3 x 6.8mm, in gold collet mouth, surrounded by diamonds, in silver mount and shank with engraved gilt shoulders, ring size S, 10.0g gross.
£200-300



- 1313 **An Edwardian citrine pendant**, the rectangular step-cut citrine measuring 20.4 x 15.9 x 9.9mm, in gold collet mount hanging from a circular citrine on cable link chain, gold is unmarked but expected to be 14ct-18ct, chain 42cms, drop 4cms, 10.4g gross.
£100-200



- 1314 **An emerald and diamond cluster ring**, the rectangular step-cut emerald measuring 6.9 x 5.0 x 3.0mm, surrounded by twelve brilliant cut diamonds weighing a total of approximately 0.50 carats, in platinum mount and shank, ring size N, 3.6g gross.
£300-500



Fine Jewellery Auction, 22nd Mar, 2024 11:00

- 1315 **A single stone diamond ring**, the brilliant cut diamond measuring 6.8 x 6.8mm (depth unobtainable), estimated to weigh 1.25 carats, in collet setting flanked by 18ct yellow gold swan-neck shoulders and shank, ring size O, 6.0g gross.
£1,000-2,000

